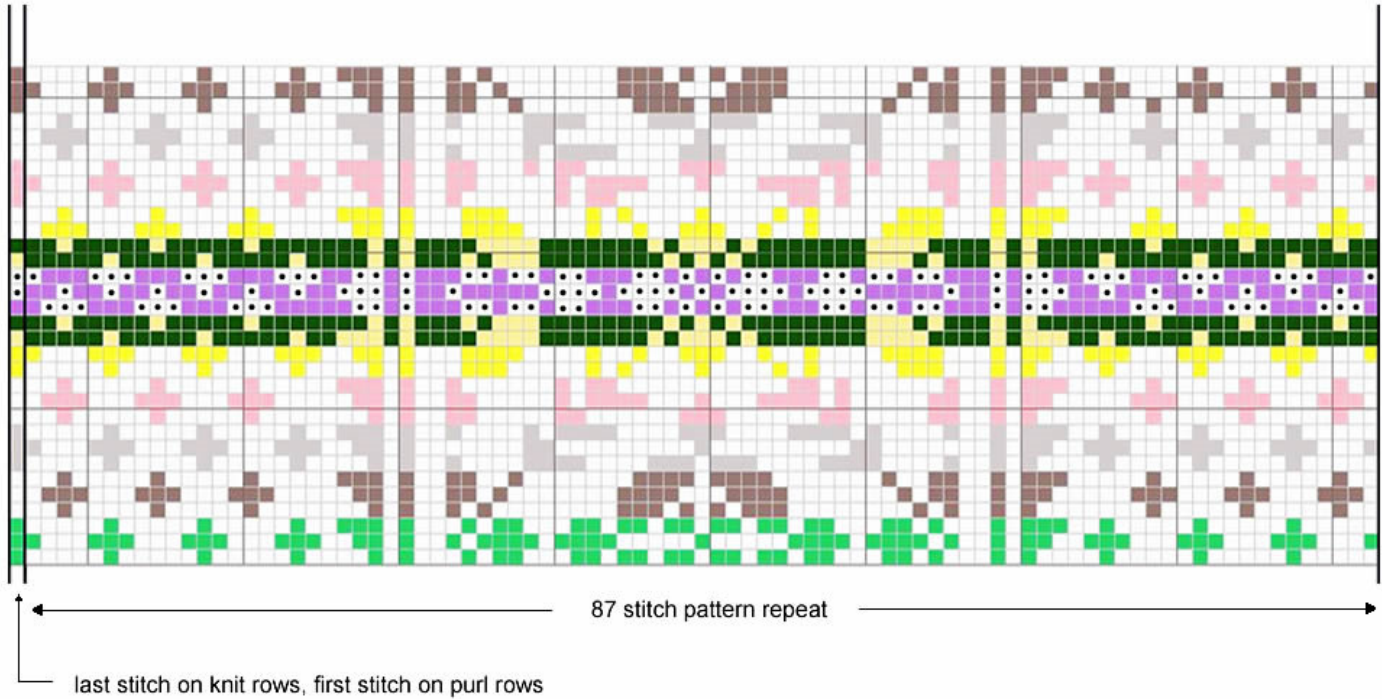


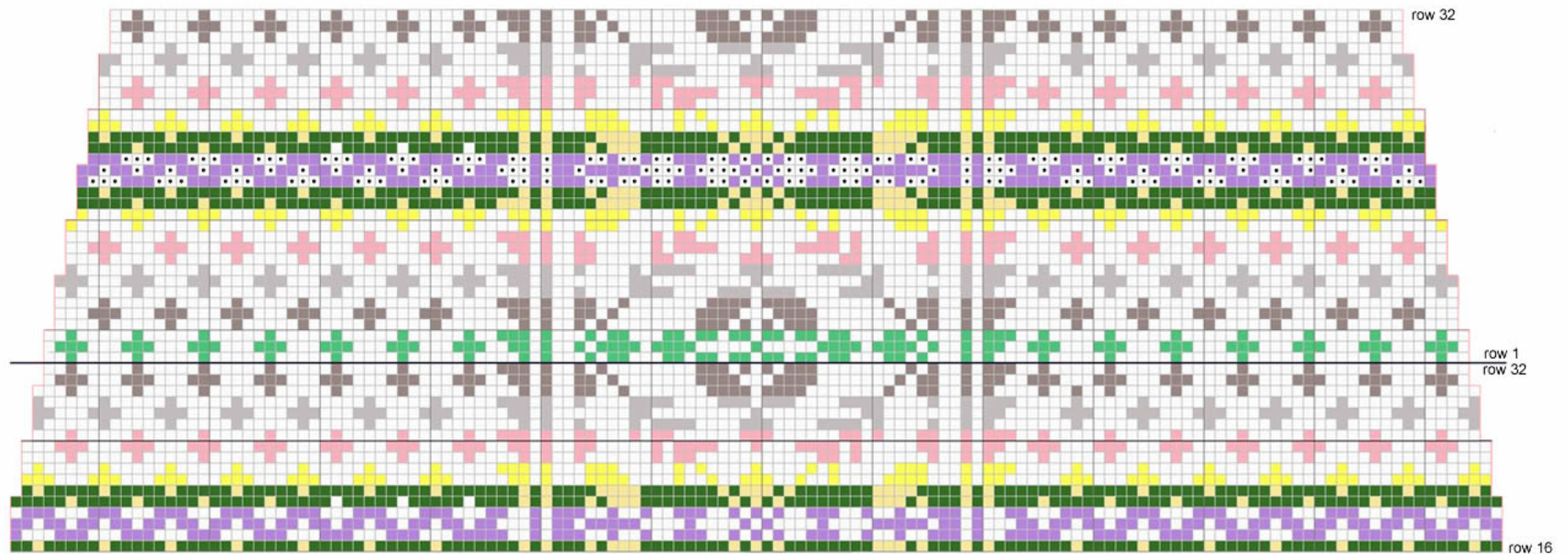
Main Chart



KEY

- main colour (29)
- leaf green (25)
- dark bullrush (78)
- light bullrush (202)
- pink heather (95)
- gorse (28)
- primrose (96)
- dark moss (82)
- purple heather (72)
- white heather (1)

Sleeve Chart - showing the layout for the first 49 rows of the sleeve.



For the sleeves, (worked top down), start on 16th row of main pattern, laying out the pattern as written in the instructions, extending the side panels as shown in this chart. The solid black line indicates the beginning of the 32-row pattern, as shown in the previous chart, and shows the first full repeat of the pattern, with the decreases. As per the instructions, you need to complete 4 patterns, as well as continuing with the decreasing.